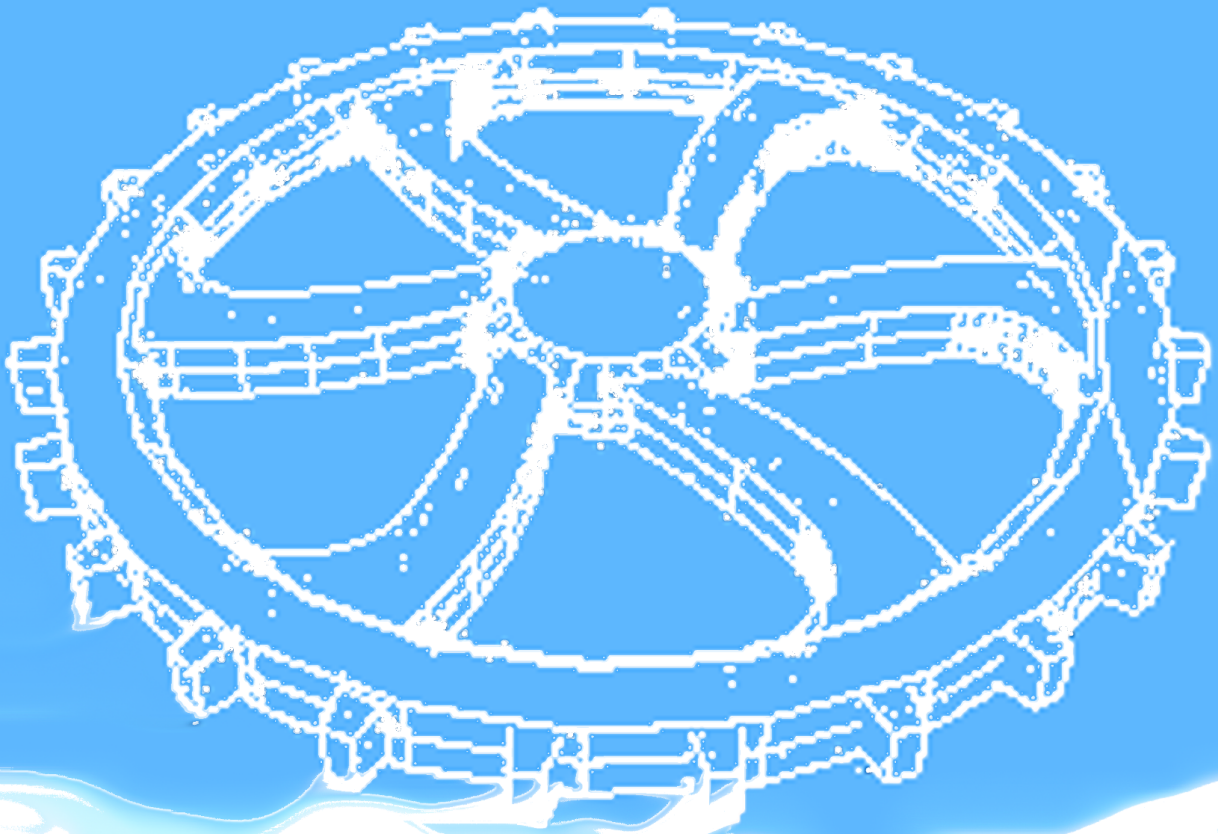
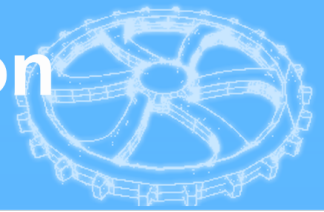


Analisis stress and Certification



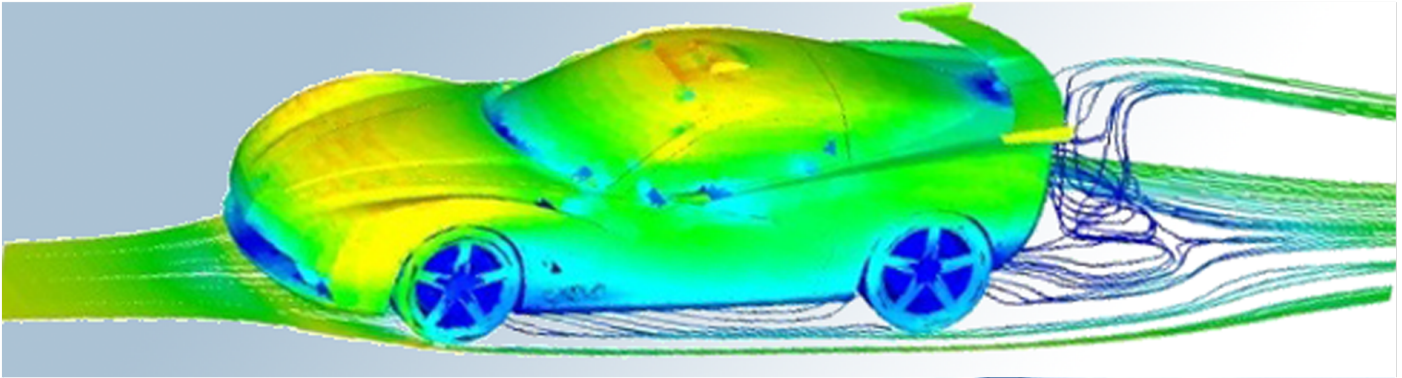
EDAM CAD Services,
Royal Leamington Spa. Warwickshire. United Kingdom.
Whatsapp: +44(0) 759 879 2910

Analisy stress and Certification



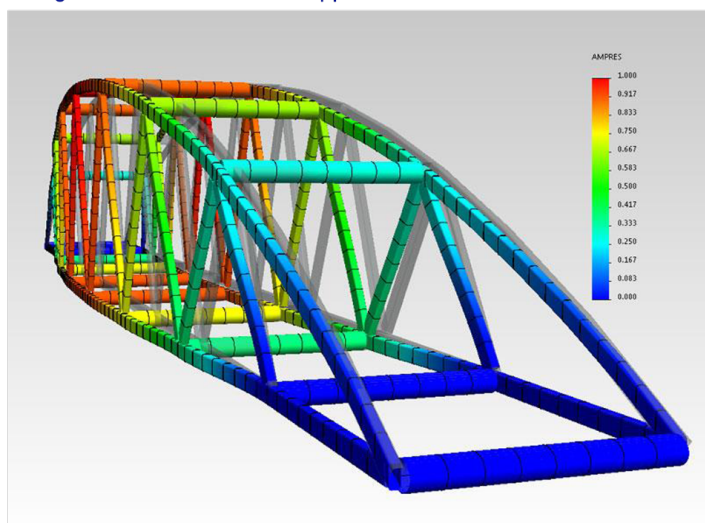
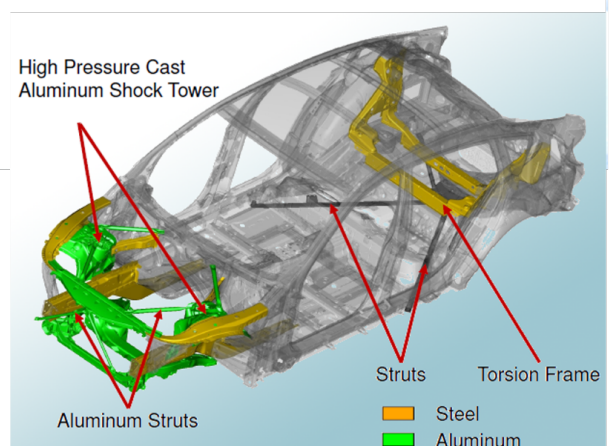
EDAM CAD SERVICES, our aim is to become a preferred supplier for Material Stress Management, Multiaxial fatigue of composite materials etc., in the United Kingdom and globally, also providing engineering solutions, project management, and facilitating the work of our clients throughout the product life cycle.

We are aware that this is a very competitive sector, but we are confident that our experience and expertise in design and structural stress calculation, and in the definition and integration of systems, testing, production line support, and supply chain management, collectively totalling decades, can bring an added value to a range of projects.



As the future of industrial processes are transformed by digital technology, innovation, and improvements in production, efficiency and manufacture; 3D printing, digital management, virtual or augmented reality, and new materials, we are presented with the opportunities implicit in the growth of Industry 4.0.

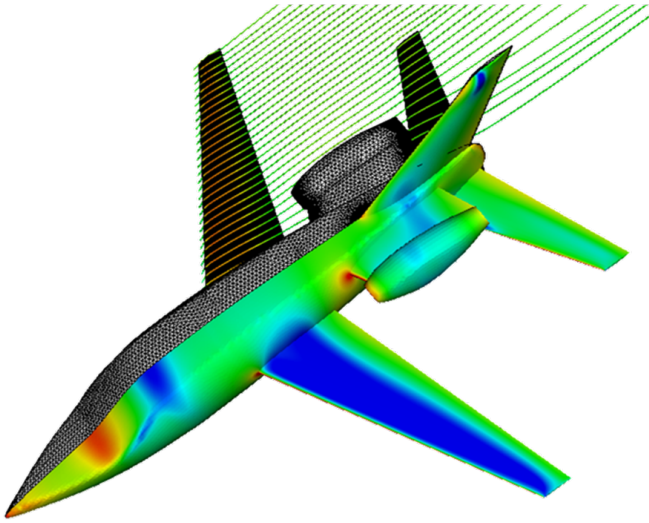
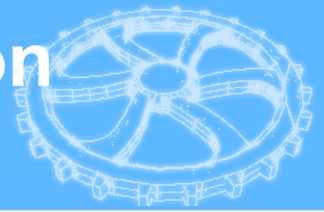
We are able to provide R&D, innovation in manufacturing processes, or substantial improvements in maintenance processes in the context of aircraft manufacture, civil engineering, automotive and heavy vehicles, support machinery, and also high-quality material stress calculation, tensile strength, compression strength etc.. We are looking for collaboration with universities and investors to achieve this transformation, developing these technologies, alongside our own in-house applications.



We can provide flexible teams of experienced engineers as and when needed by the client, all our team members are highly trained and well qualified and can work remotely or hands-on.

- EDAM CAD SERVICES** supply expertise and supervision for everything related to engineering support and manufacturing.
- We are able to manufacture a wide range of products and parts to order.
- We cover all activities associated with product fabrication, from definition in models or designs to finished product, including process planning, tool design, assembly support, digital production, offline balancing and simulation.
- Customer specification.
 - Technical support.
 - Documentation, design and customer requirement.
 - Design of tools for manufacture and assembly
 - Ground support team (GSE).
 - Manufacturing engineering support.
 - Mounting engineering support.
 - Simulation of manufacturing processes.
 - Technical Instructions (TIs Graphics).

Analisis stress and Certification



PRODUCT SUPPORT ENGINEERING

Including engineering activities related to the definition and development of products.

Activities that cover R&D, design and definition of products such as automobiles, airplanes, trains, etc., including, for example, design conceptualization, engineering, and sizing details.

- Conceptual design, style and specifications
- Material selection and testing
- Systems engineering
- Mechanical and electrical installations
- 2D drawing and documentation
- Harnesses and 3D installations
- Test design

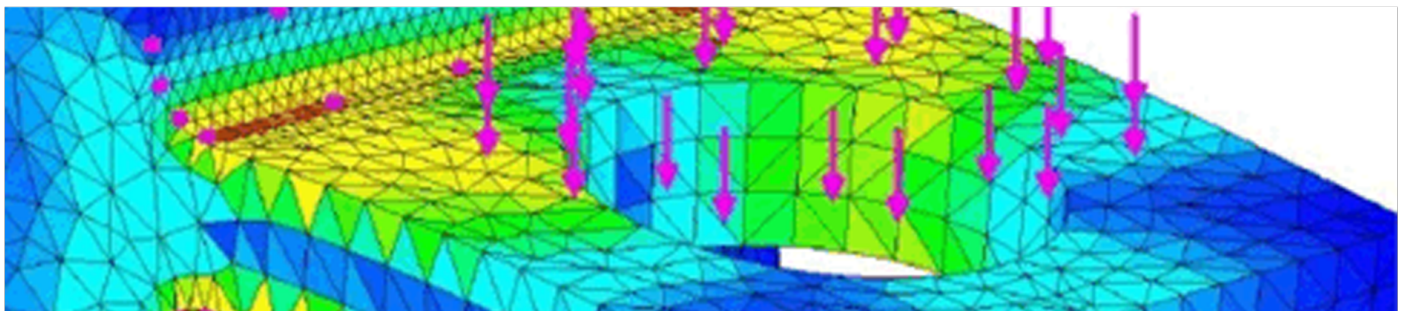
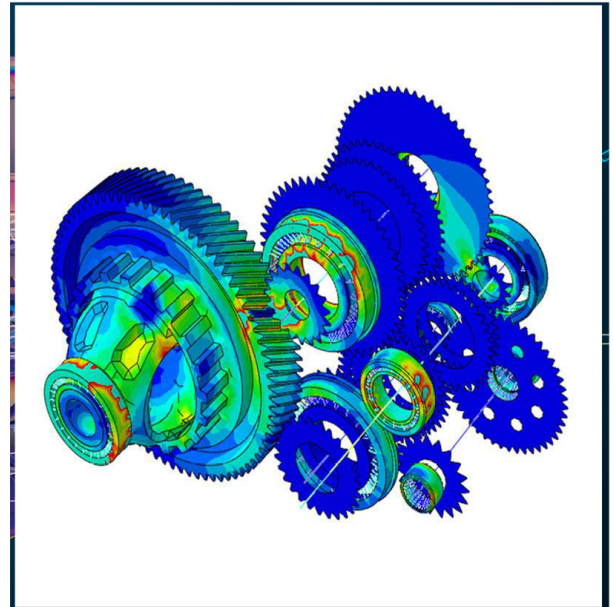
PRODUCT COMPLIANCE (stress and certification)

From the preliminary development of innovation in the conception of the product, to the precise definition of assembly drawings, we cover all your product development needs; process and product specification, basic and detailed engineering, structural calculation, definition and realization of product validation tests, and any activity necessary for rigorous product definition.

We provide advanced technological solutions for product manufacture and industrialization.

Other Services

Along with process planning, tooling design, assembly support, engineering activities, simulation, material testing and certification, we bring a wealth of experience in production management, also in post-manufacture and after-sales support.

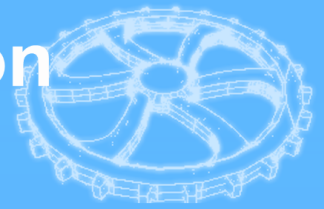


EDAM CAD SERVICES is concerned with promoting research and development towards carbon-free mobility through technological research, including the key areas of development and manufacture of hydrogen fuel cells and new generation batteries.

As the future of transport is one of the great challenges for the UK government amid increasing awareness of our environmental impact, the development of alternative low-carbon solutions is of great national (and international) importance.

EDAM CAD SERVICES is committed to helping UK industry stay ahead in a rapidly developing sector..

Analisy stress and Certification



Company Values and Code of Ethics

a) Honesty:

Understood as a fundamental moral value to establish internal interpersonal relationships with the members of the organization based on trust, sincerity, and mutual respect.

b) Trust:

Understood as the security in the realization of our commitment to our clients, taken on with seriousness and responsibility.

c) Respect:

Understood as the indispensable value that makes it possible to establish a relationship of trust with our clients as an indispensable condition for effective communication and results.

d) Service Attitude:

We work every day to satisfy the needs of our clients, to meet these requirements in terms of time, cost, and quality.

e) Teamwork:

We work for a shared goal and help each other to achieve it together.

f) Project management:

We have interdisciplinary teams in various business areas with experience to ensure the successful development of a multitude of projects.

Our Structure

We are constantly adding skillful personnel with knowledge and experience to develop specific high demand projects in the industrial, commercial, and institutional sectors.

We currently cover electrical engineering, finite elements for stress calculation and certification, as well as mechanical engineering.

Our Team

Trouble coping with the current workload?

Let EDAM offer our teams of engineers, experts trained to work both remotely and in-house.

Ask for a consultation now to assess our services.

Corporate Training Services

EDAM can also support your corporate training we offer the following customised courses:

CAD / CAM

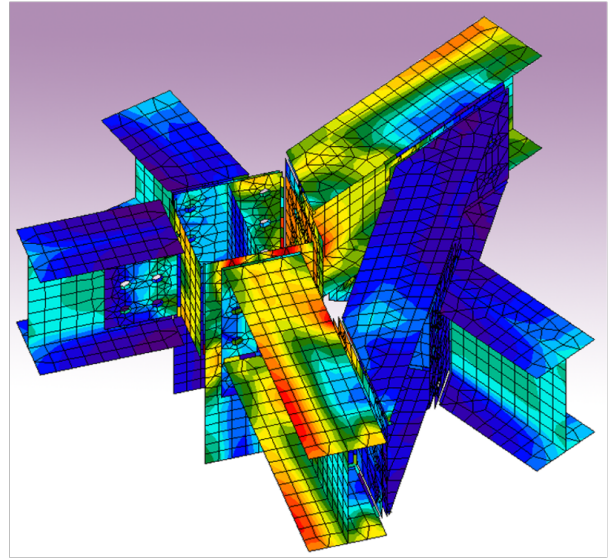
Electrical

Mechanical

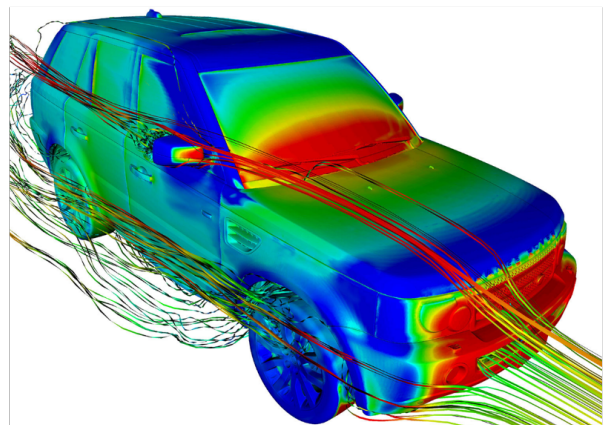
Maintenance

Stress

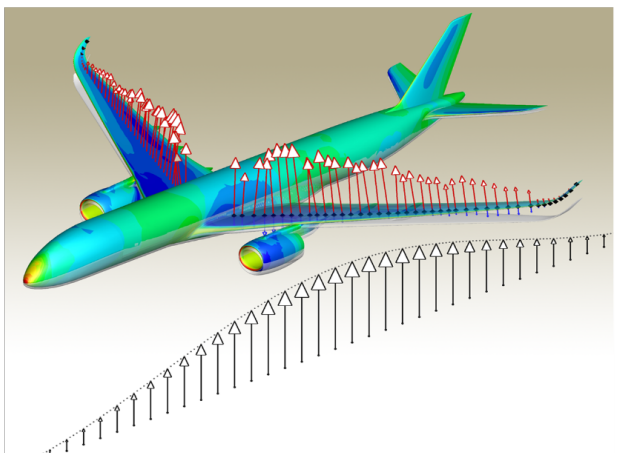
.



Non destructive component testing in civil engineering

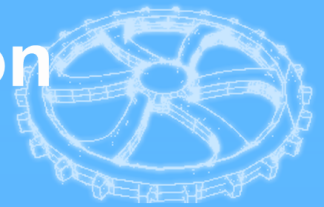


Automotive expertise gained on Land Rover and other vehicle manufacturing projects.

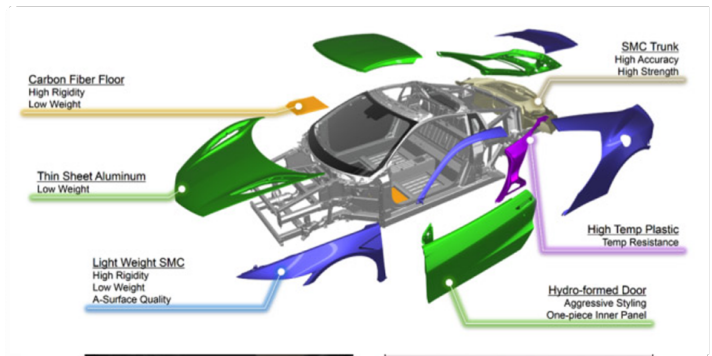


Many years of experience in the aerospace industry, working on stress assessment on various high profile civil and military projects.

Analisy stress and Certification



EDAM CAD SERVICES has agreements to provide and supervise everything related to electrical engineering and manufacturing support. This includes all the activities associated with the manufacture of the product, from its definition in models or designs, until it leaves the assembly line: process planning, tool design, assembly support, digital production, offline balancing and simulation. We are able to manufacture a wide range of products and components with our associates..



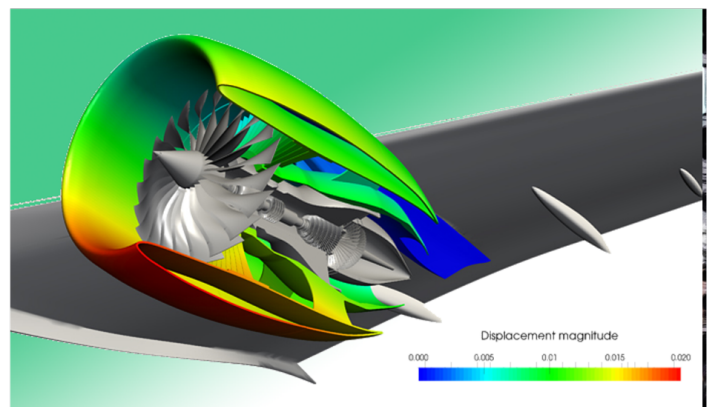
We can offer thorough and complete material testing and reports

We are currently looking for joint-venture partners in the Development of earth-friendly transport systems for example; new generation batteries and energy cells, among other sources of propulsion, with the aim of achieving zero carbon emissions.



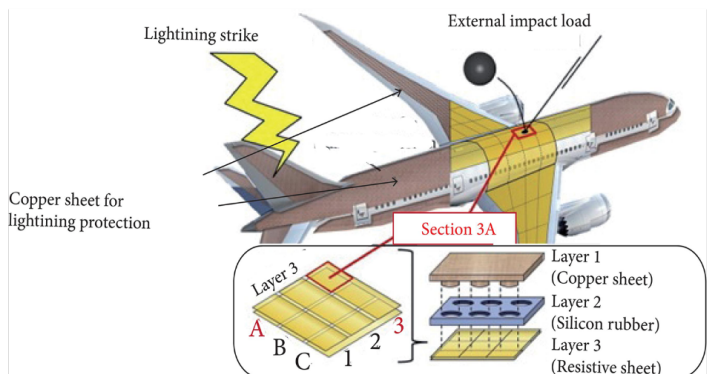
Enabling and improving safety systems and support for the aerospace industry

As the future of industrial processes go through transformation to digital technology, and models of investigation and testing improve in both production and manufacturing processes with innovations like 3D printing, Industry 4.0, digital management, virtual or augmented reality among other areas of development.



Ensuring reliable, durable component interfaces which can survive the toughest, most rugged conditions, strength tested for security

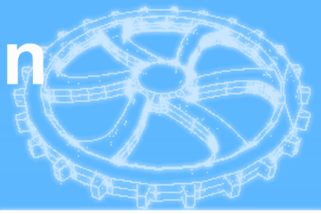
Our aim is to provide R + D and innovation in material strength management thereby offering enhanced security and/or substantial improvements in maintenance procedures. These are some of the challenges facing all branches of the industry; new materials, extended purpose units, greater useful lifetime, versatile connected and autonomous vehicles subjected to unexpected stress situations. With our collective experience spanning decades in these fields, Edam CAD Services can bring added value to your project, increasing efficiency and keeping down costs.



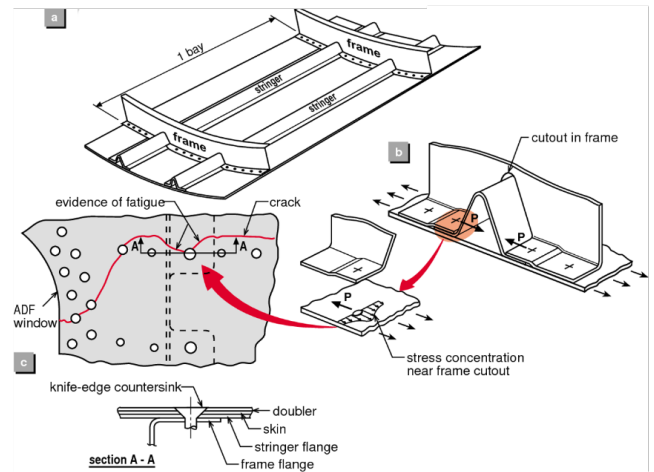
We have detailed knowledge of modern aircraft materials and design

For more information interested parties should not hesitate to get in touch.

Analisy stress and Certification

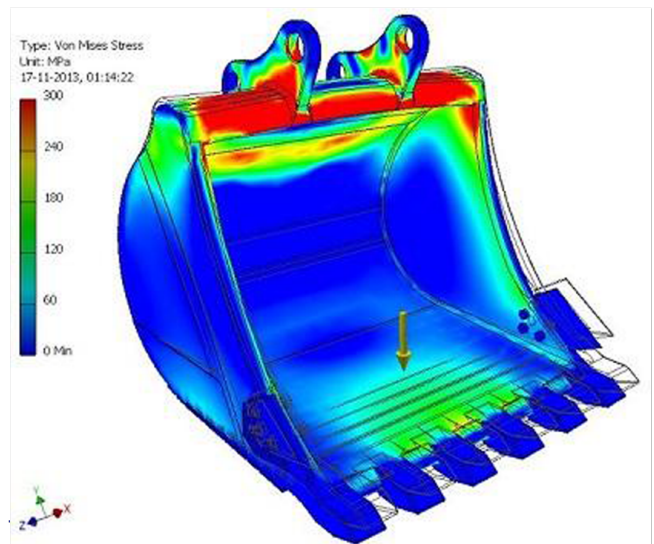


Our young, energetic, highly skilled teams have decades of experience working on important, high profile tasks, participating in various projects in collaboration with several companies including Boeing, Airbus, Land Rover, Talgo, Caterpillar and many other iconic organizations.



Basic Comet 1 shell structure

Edam CAD Services bring a positive can-do attitude and strong perfectionist work ethic, adding value through our enthusiastic and flexible multifunctional teams, from consulting to construction and beyond. Also we are able, through our associates, to produce components as needed.



Von Mises Stress analysis diagram

We are interested in developing our environmentally responsible, sustainable business model in conjunction with other forward looking institutions, universities and companies.

To discover how we can help your project do not hesitate to contact us through our website:

www.edamcadservices.com or
by email: sales@edamcadservices.com
or by Whatsapp: **+44(0) 795 879 2910** |



Jet engine leap; engine cutaway 1

We look forward to hearing from you